

ADMINISTRATION GUIDE

Version 1.0

April 11, 2007

Author: Alex Khizhnyak

Email: alexey.kh@apatar.com

Table of Contents

1. Introduction	3
2. Apatar Administration	3
2.1. <i>Visual Job Designer</i>	3
2.2. <i>Connectors</i>	4
2.3. <i>Operations</i>	4
2.4. <i>Visual Mapping</i>	6
2.5. <i>Execution Preview Results</i>	8
2.6. <i>Project Execution</i>	9

1. Introduction

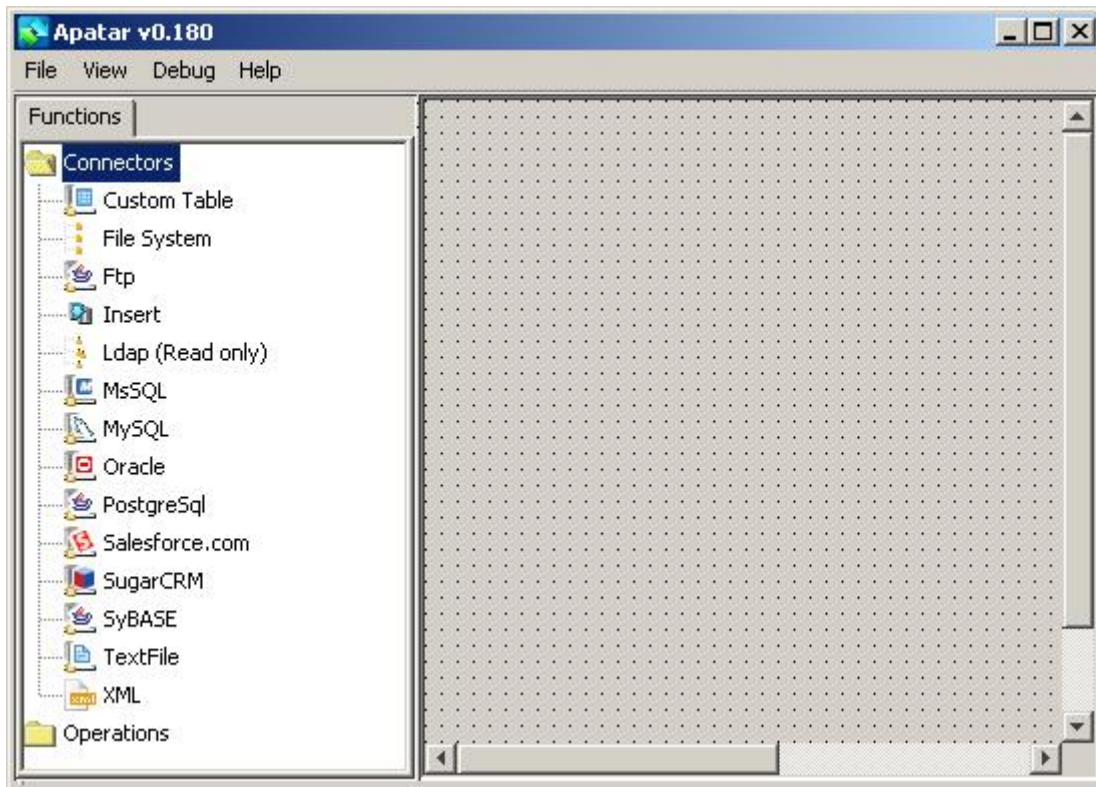
All Apatar administration actions are easy and require no coding!

2. Apatar Administration

2.1. Visual Job Designer

Apatar Visual Job Designer is a field where you can manage data source connectors and establish operations between them. To start integrating data sources, you need to drag-and-drop appropriate source connectors into Visual Job Designer, as well as drag-and-drop operation icons you need. After that, you can adjust connector settings to establish connections and gain access to data tables. Finally, you perform visual mapping and set relations between connectors. As a result, you'll be able to integrate data sources with just one click.

Figure 2.1.1 Apatar's Visual Job Designer



2.2. Connectors

Connectors are intermediate tools that help either extract information from data source into Apatar, or load information into data location. Commonly, each data source requires appropriate connector which should be adjusted to operate with data entries you need. Apatar Data Integration embeds the following connectors: Salesforce.com, SugarCRM, Custom table, FileSystem, TextFile (including both .txt and .csv formats), MSSQL, MySQL, PostgreSQL, SyBASE, XML, Ldap (read only), FTP, File System, and Oracle connector. To learn more about each connector, please read connector guides on Documentation page.

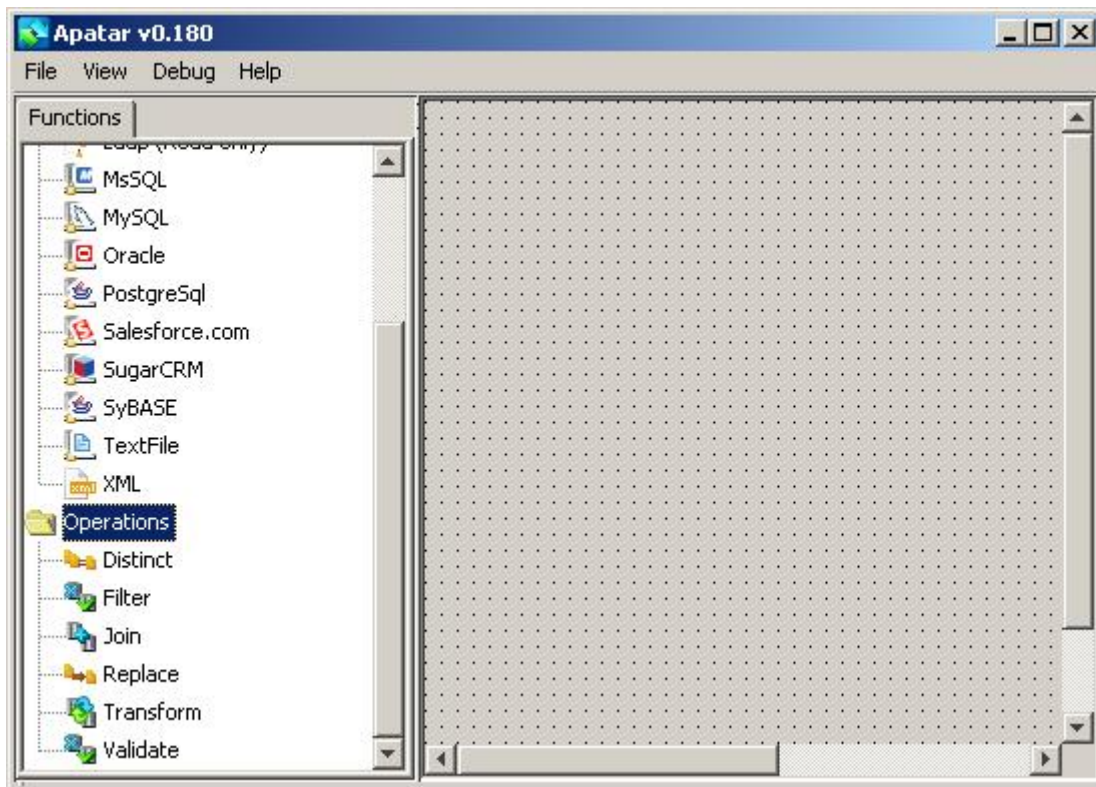
2.3. Operations

Operations are used to manage data extracted from data sources. Using Operations features, you can mash-up data or transform it for loading into another data warehouse. In most cases, source data fields should be mapped with destination data fields in an operation module.

Embedded Apatar operations are:

- *Distinct*
(eliminating data duplications)
- *Filter*
(filtering data according to condition)
- *Join*
(mashing up data from more than one data source)
- *Replace*
(updating the entries in data tables)
- *Transform*
(transforming source data according to destination data formats)
- *Validate*
(dividing source data tables according to specified parameters)

Figure 2.3.1 Apatar Operations

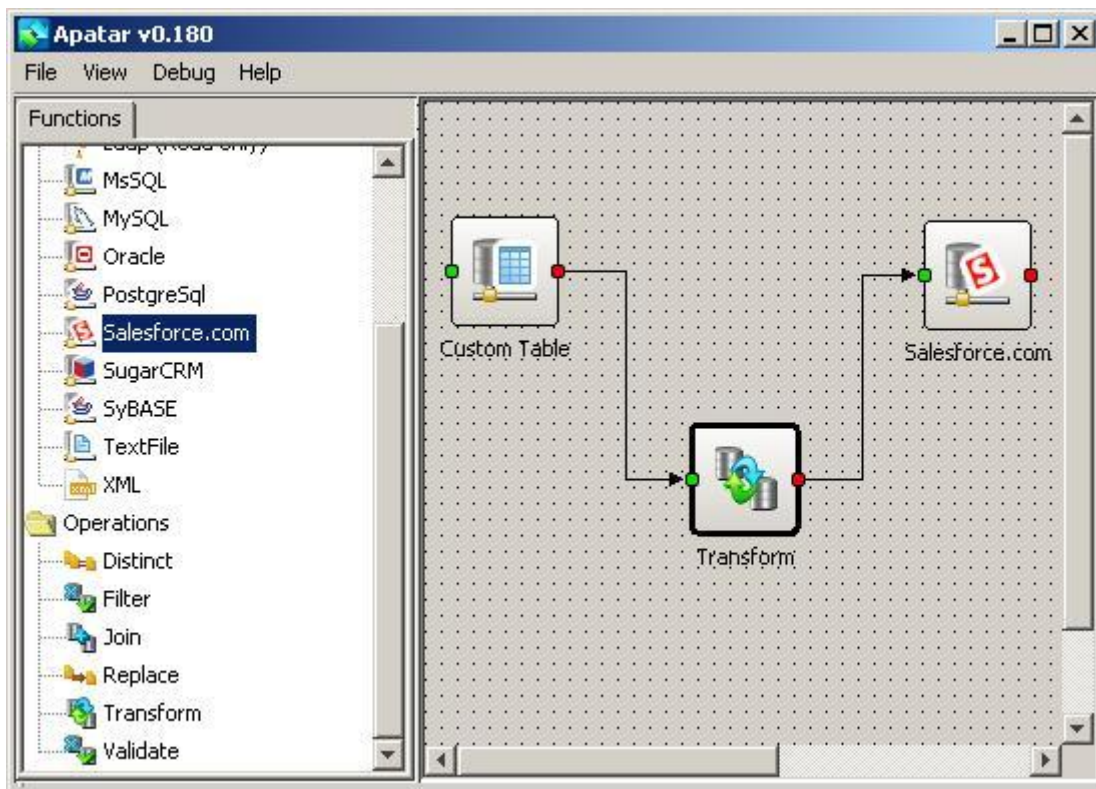


2.4. Visual Mapping

To provide data integration, you need to map corresponding data fields, or tables, or data source connectors with each other. The mapping is performed in Apatar Visual Job Designer and in operation modules.

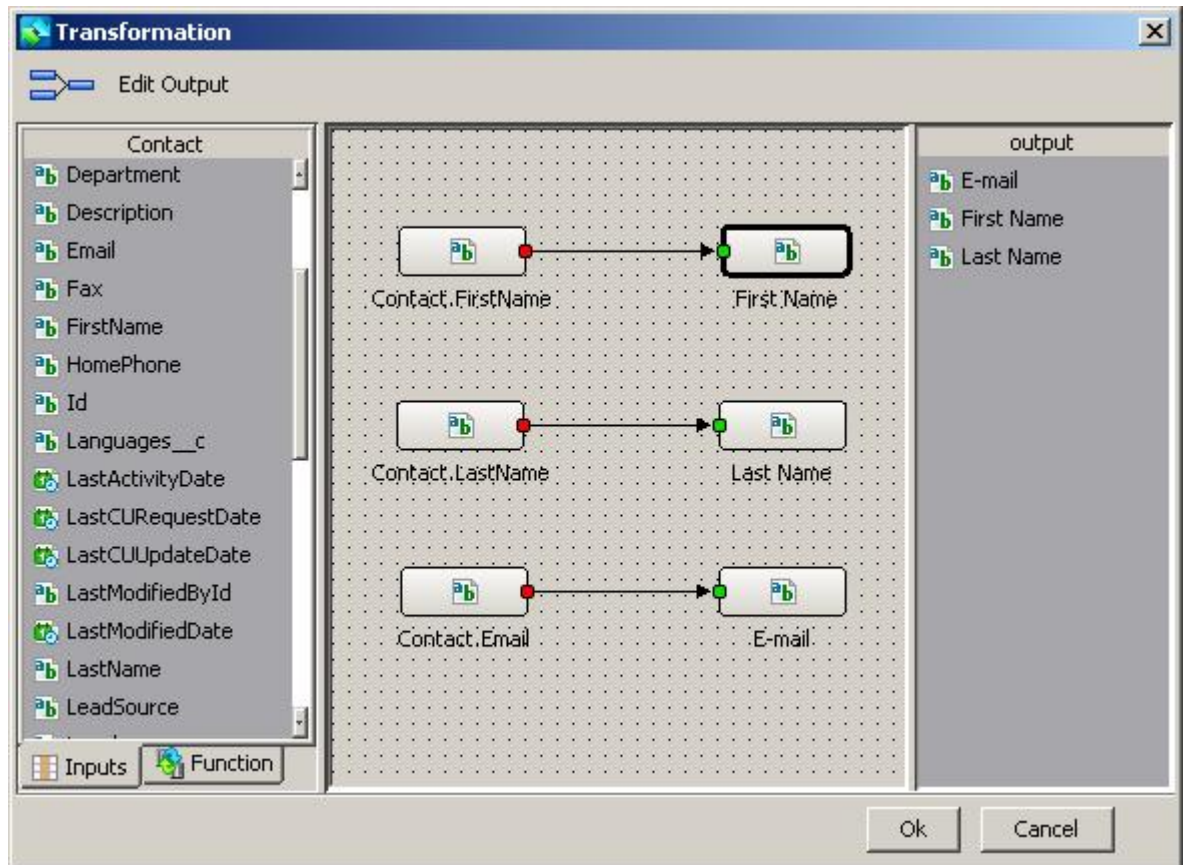
To start mapping, click on the red circle of a source connector and drag-and-drop to the green circle of a destination connector/operation icon, so that an arrow appears. (In Apatar modules, the small red circle indicates the source of data, the green one is for incoming data.)

Figure 2.4.1 Visual Mapping



Remember that most connectors require "Transform" module between them which should be adjusted properly. You need to map all corresponding data fields inside the module. To do so, double-click on "Transform" icon and drag-and-drop corresponding fields into the module's work space. Then map the fields of data source with the fields of output database, which are corresponding, and press "Ok".

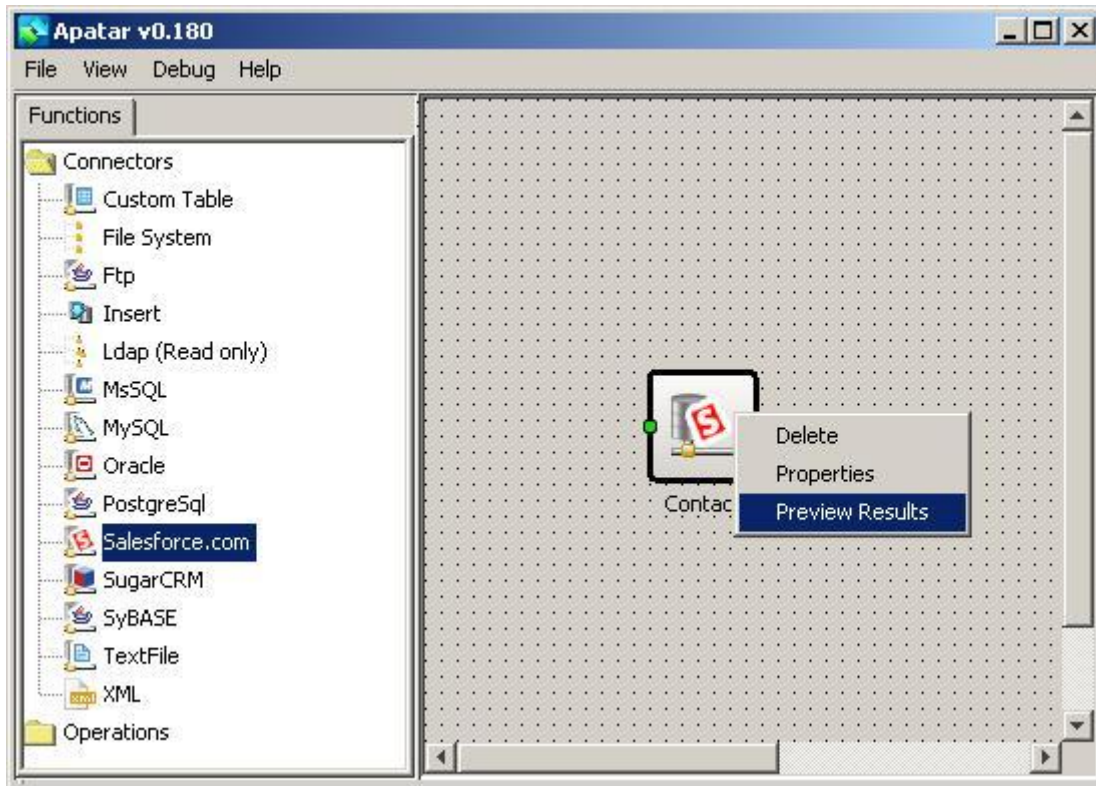
Figure 2.4.2 Transform Operation Module



2.5. Execution Preview Results

If necessary, you can preview the entries of selected tables and sources. To do so, right-click on icons in Apatar Visual Job Designer and choose Preview Results.

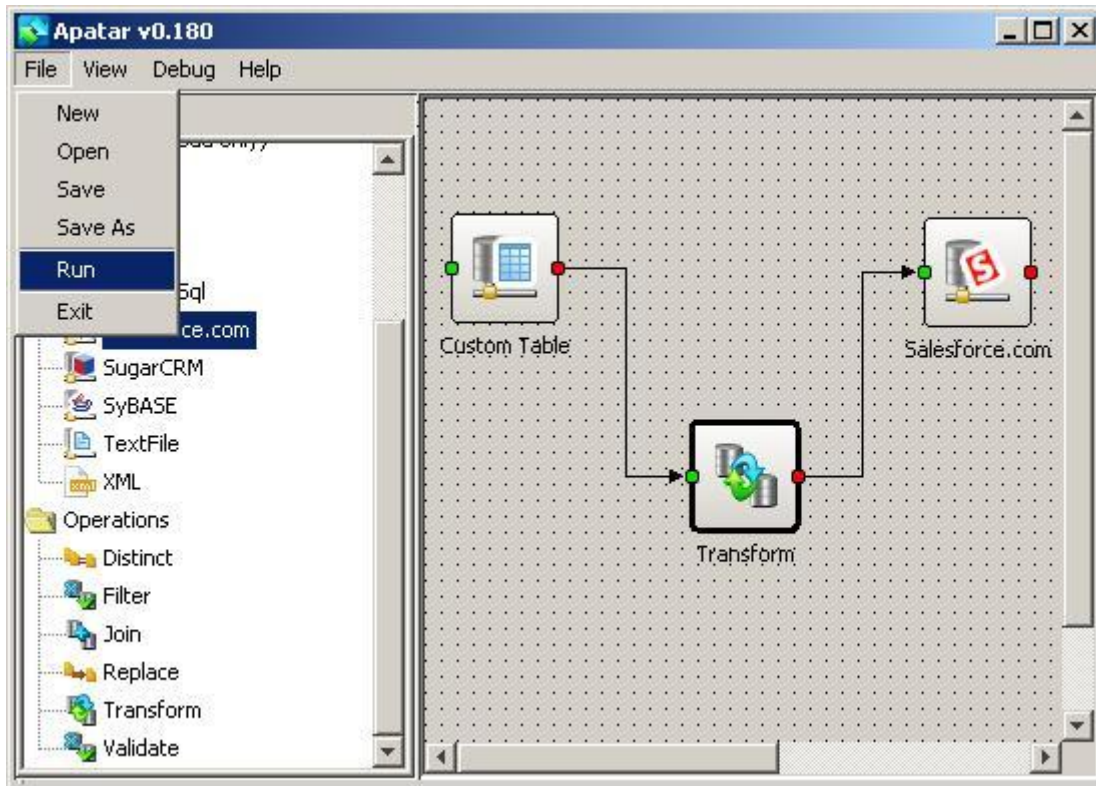
Figure 2.5.1 Preview Results



2.6. Project Execution

Project Execution is simple. After all connectors are adjusted and mapped together, select "Run" from Apatar File menu. Once pop up window has closed, the execution is completed.

Figure 2.6.1 Run Execution



Also, you can execute your project in a different way. Right-click on the end-connector, and select "Preview Results". Once the window with data entries has loaded, the execution is completed.

Figure 2.6.2 Preview Results Execution

