

SUGARCRM CONNECTOR GUIDE

Version 1.0

April 11, 2007

Author: Alex Khizhnyak

Email: alexey.kh@apatar.com

Table of Contents

- 1. Configure SugarCRM Connector..... 3**
 - 1.1. Step #1: Drag-and-drop SugarCRM Icon..... 3
 - 1.2. Step #2: Double-click on the Icon..... 4
 - 1.3. Step #3: Enter SugarCRM Details..... 5
 - 1.4. Step #4: Enter SugarCRM Web Services URL..... 6
 - 1.5. Step #5: Press "Next" button 6
 - 1.6. Step #6: Choose the source table..... 6
 - 1.7. Step #7: Press "Finish"..... 8
- 2. Preview Results..... 9**

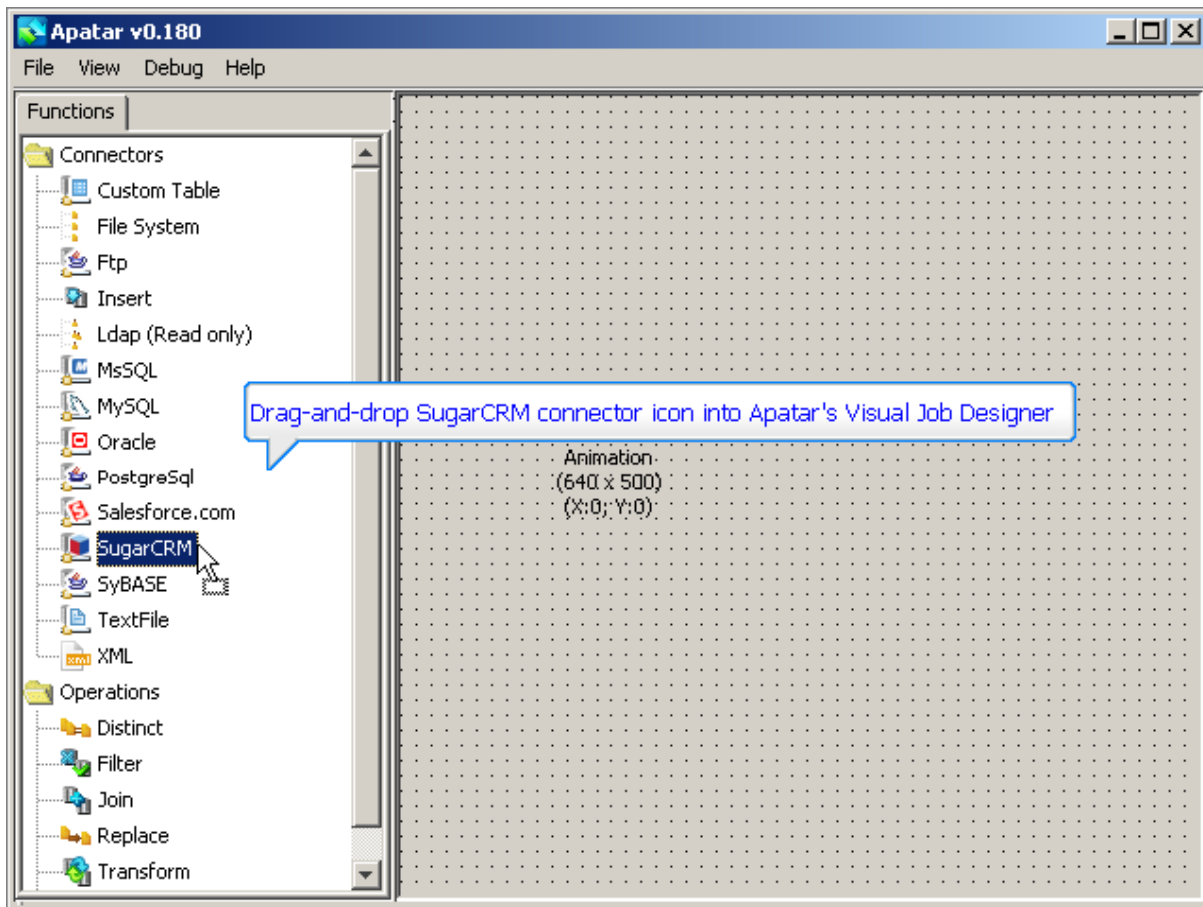
1. Configure SugarCRM Connector

To configure SugarCRM connector, please perform the following steps.

1.1. Step #1: Drag-and-drop SugarCRM Icon

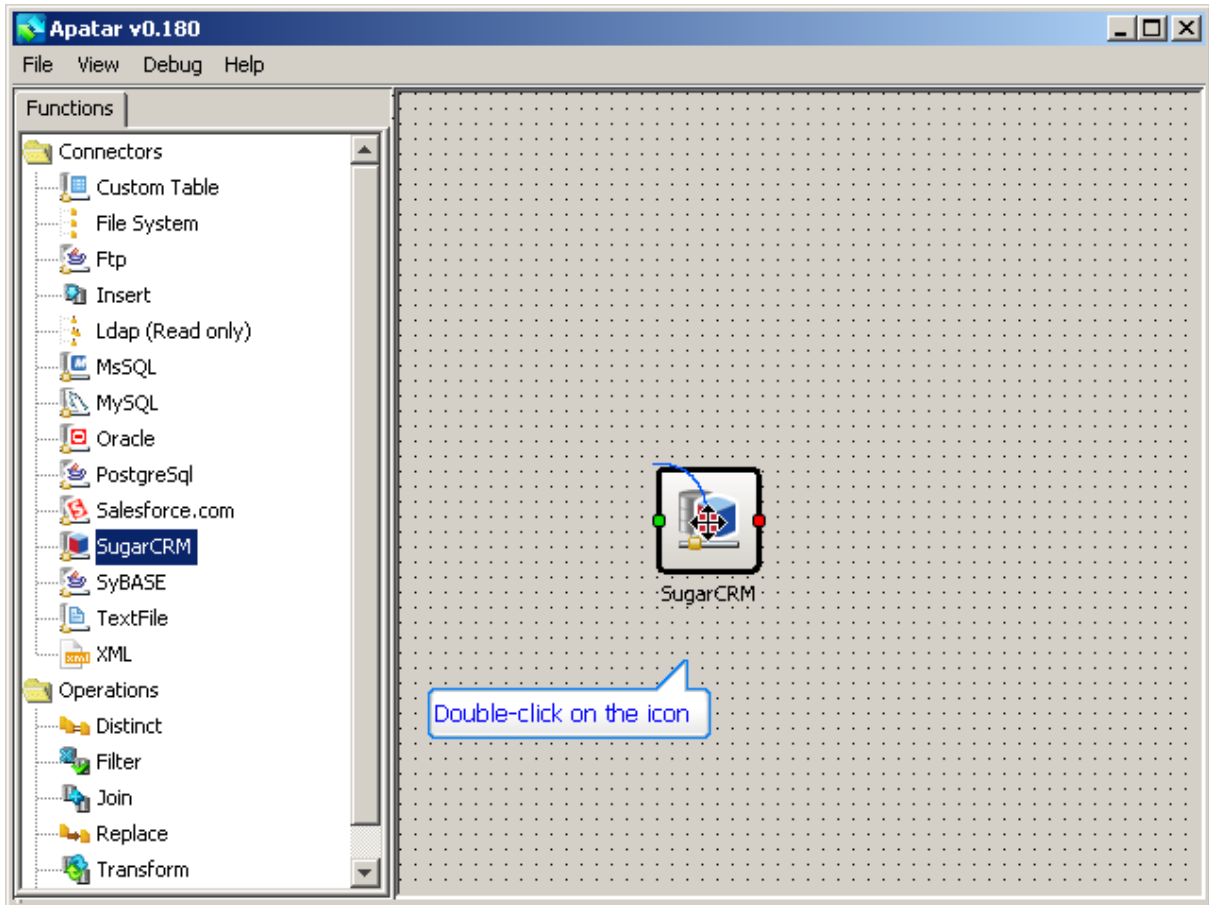
Drag-and-drop SugarCRM icon from Connectors section into Apatar's Visual Job Designer

Figure 1.1.1 Drag-and-drop



1.2. Step #2: Double-click on the Icon

Figure 1.2.1 Double-click

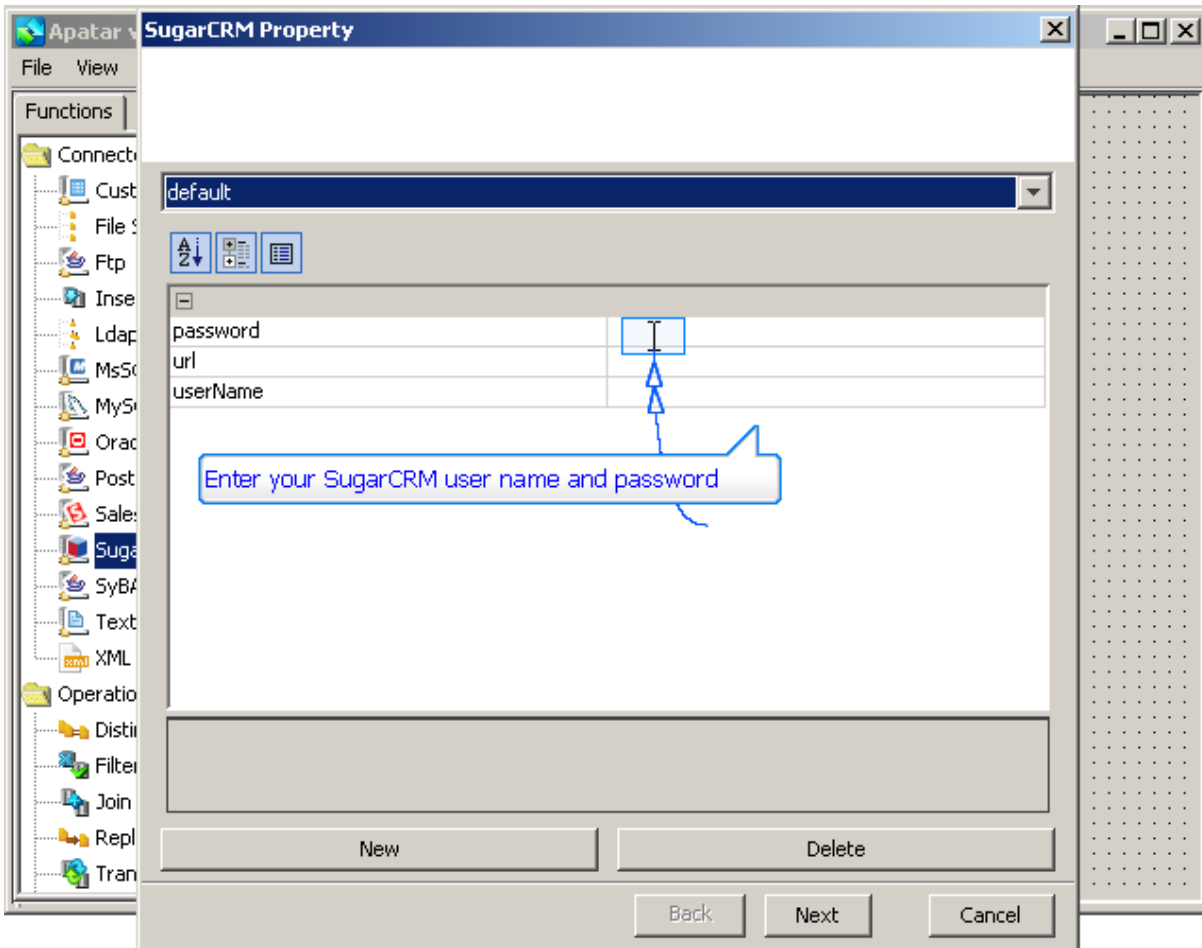


SugarCRM Property window will pop up.

1.3. Step #3: Enter SugarCRM Details

Enter your SugarCRM password and username

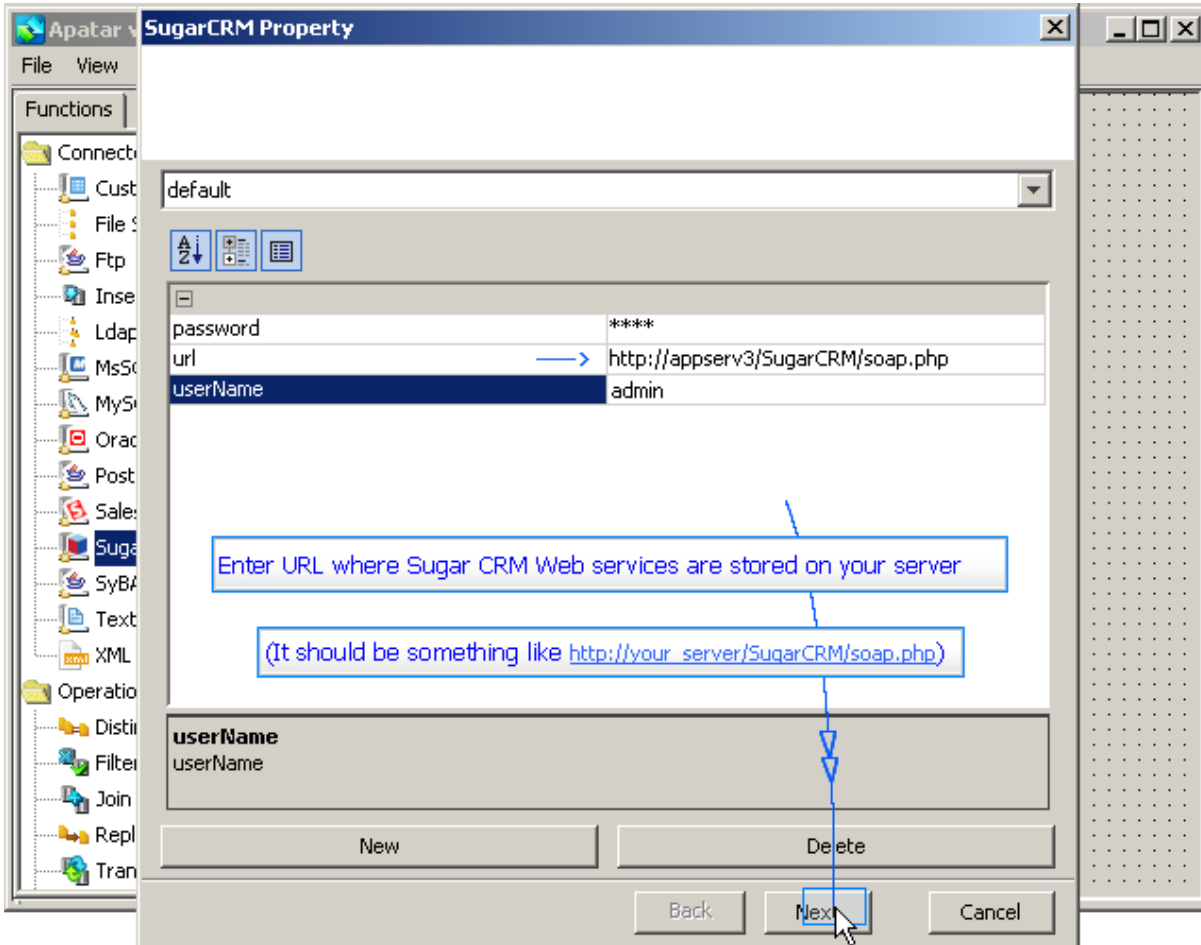
Figure 1.3.1 SugarCRM Details



1.4. Step #4: Enter SugarCRM Web Services URL

As well, enter URL address where SugarCRM Web services are stored on your server.

Figure 1.4.1 SugarCRM Web Services URL

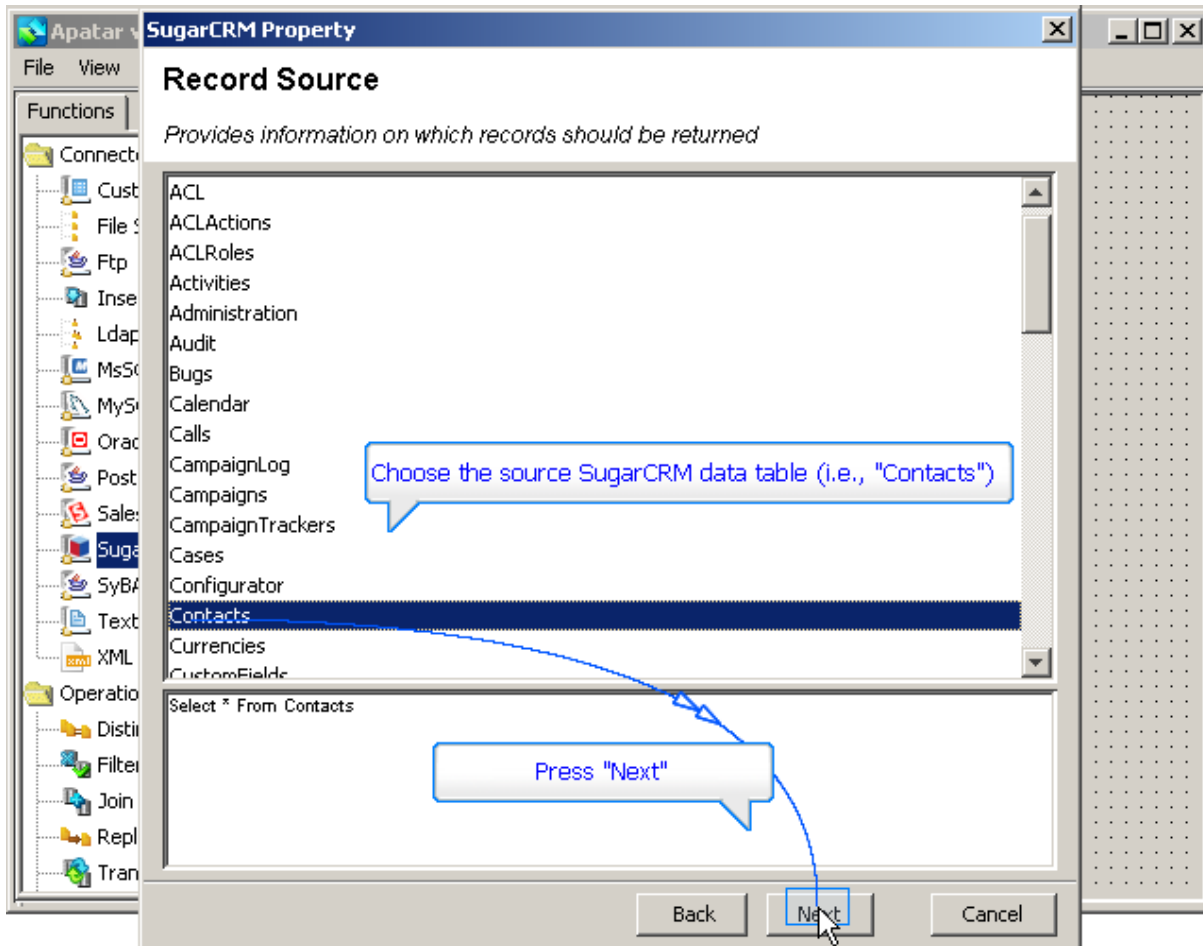


1.5. Step #5: Press "Next" button

1.6. Step #6: Choose the source table

Choose the table with source data.

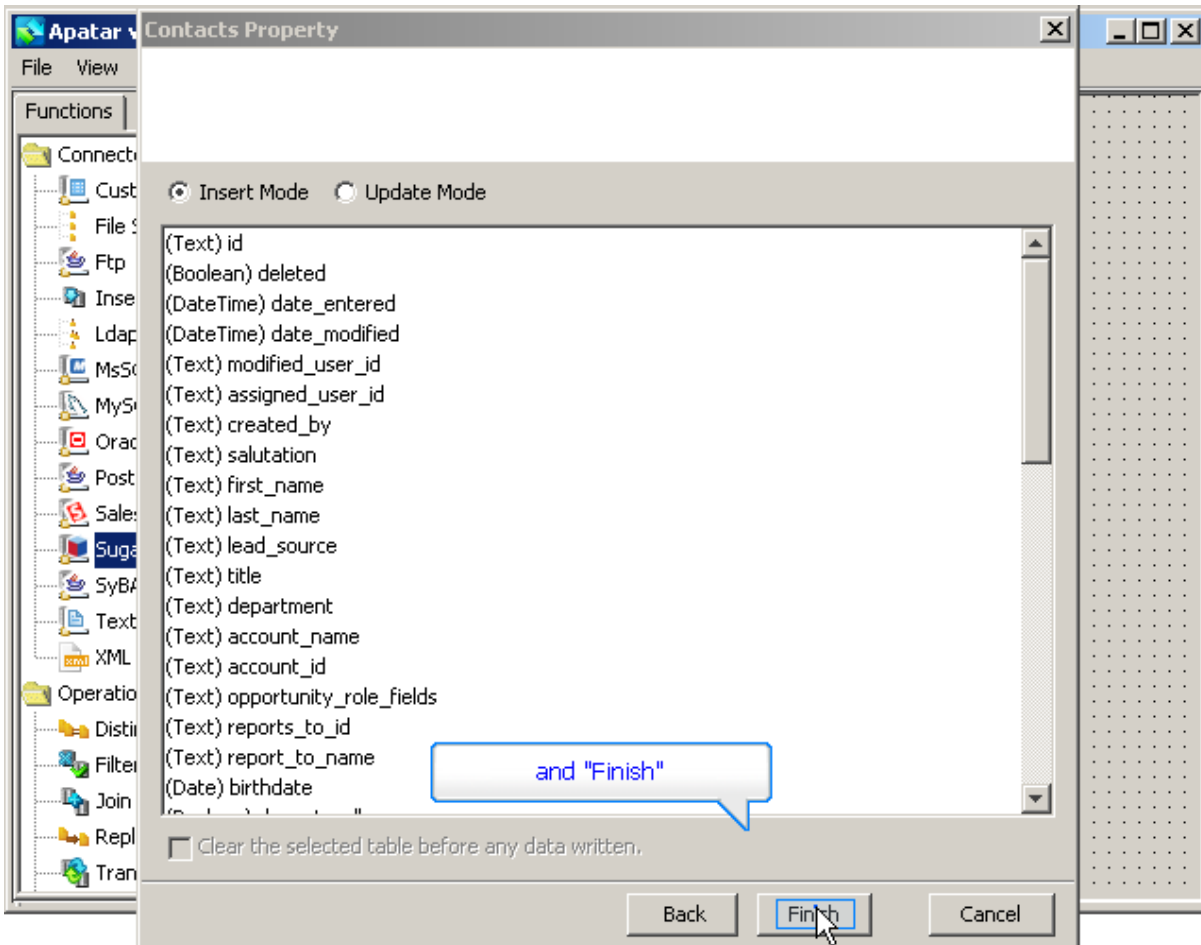
Figure 1.6.1 The Source Table



1.7. Step #7: Press "Finish"

Project Execution is simple. After all connectors are adjusted and mapped together, select "Run" from Apatar File menu. Once pop up window has closed, the execution is completed.

Figure 1.7.1 Finish



SugarCRM connector is now configured.

2. Preview Results

If necessary, you can preview the entries of the selected SugarCRM table. To do so, right-click on the SugarCRM icon and choose "Preview Results".

Figure 2.1 Preview Results Execution

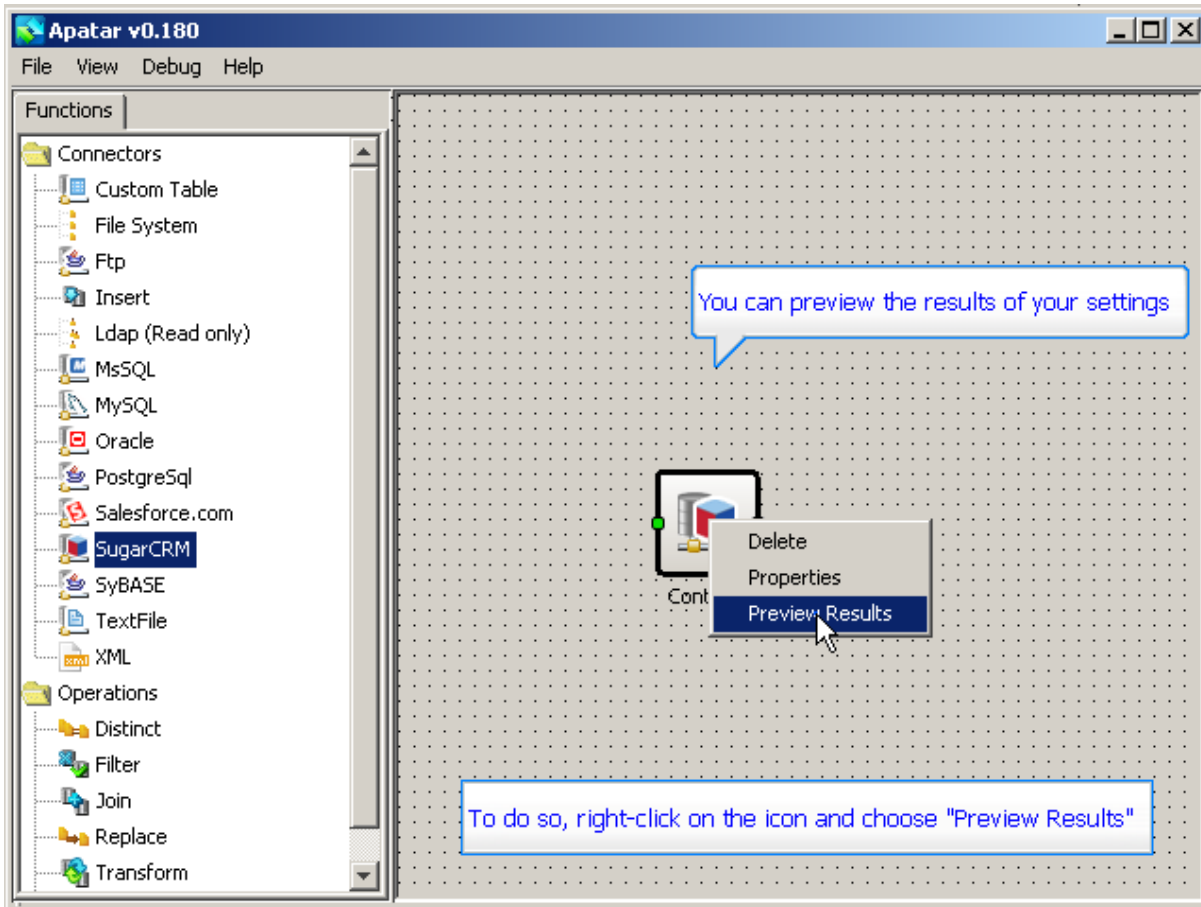


Figure 2.2 Progress Window

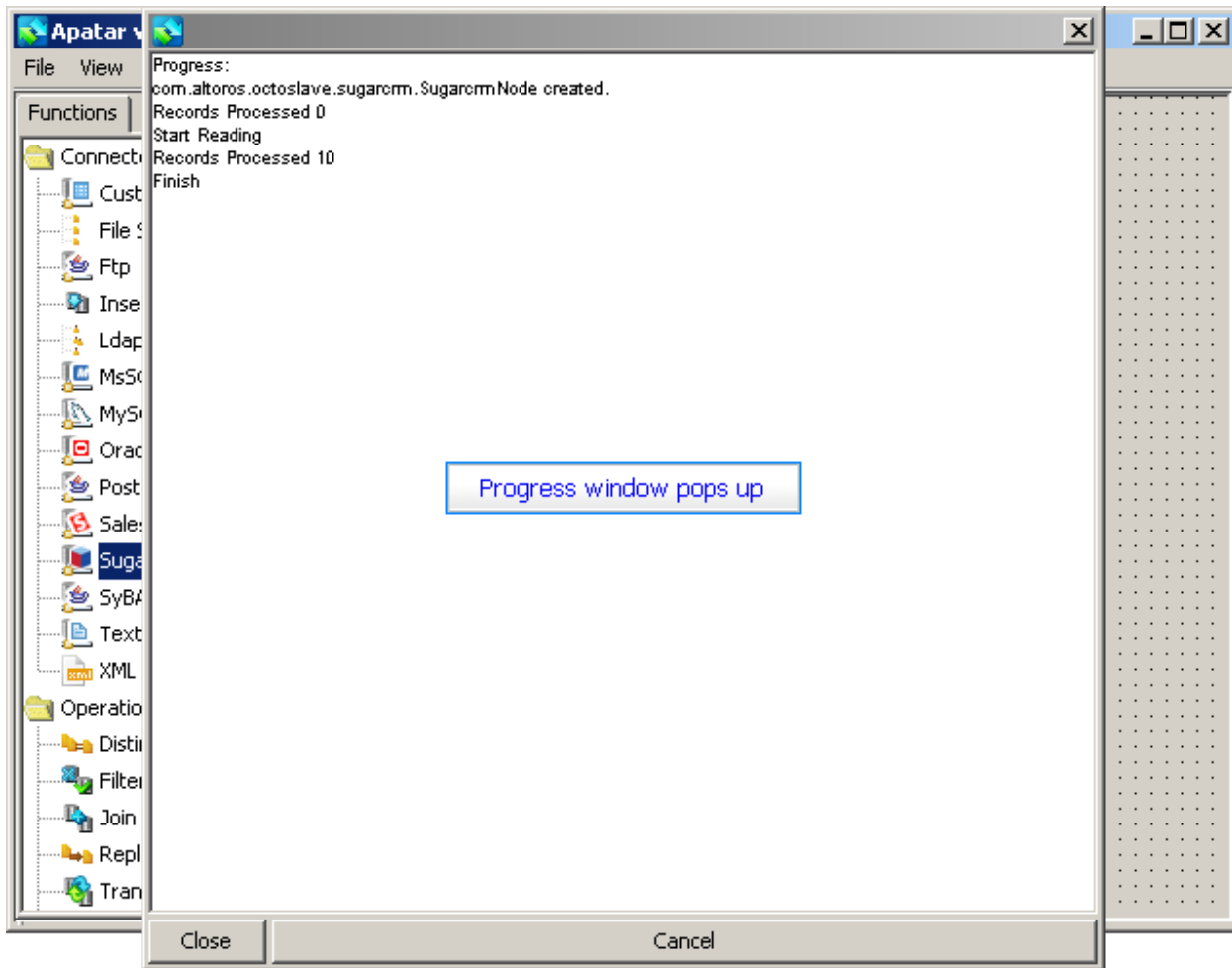
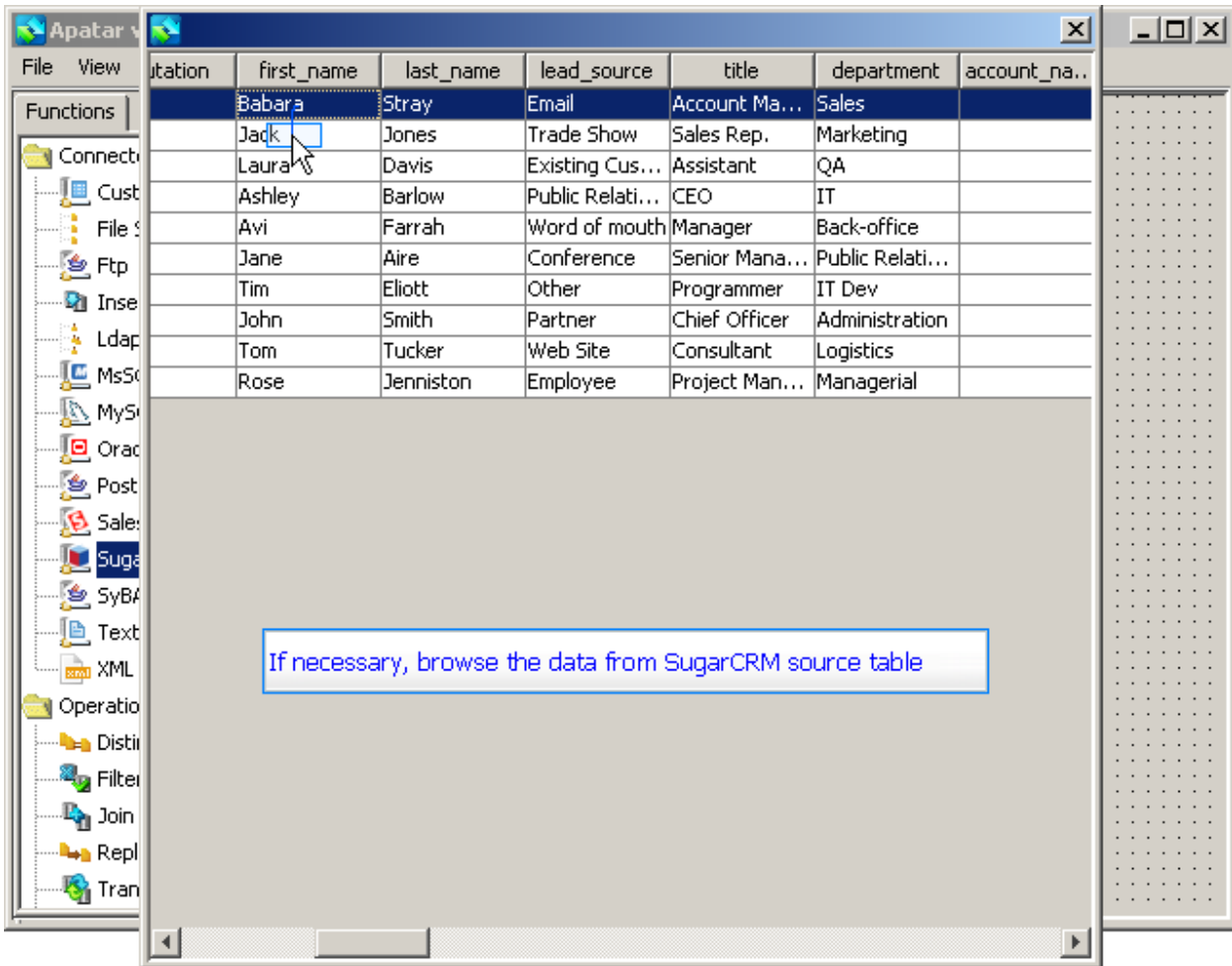


Figure 2.3 Browsing Source Data



Close the window with SugarCRM data. Also, close the additional progress window.

SugarCRM connector is ready for data integration.